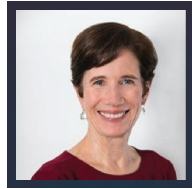


## PLENARY SPEAKERS

### Darcy Gruttadaro

*Director of Public Policy*

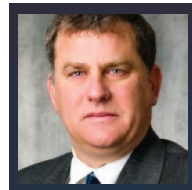
Darcy Gruttadaro leads NAMI's strategic initiatives to expand access to effective mental health services and supports for people impacted by mental health conditions. Ms. Gruttadaro has extensive experience in advocacy, policy and programmatic approaches to improving the lives of youth and young adults impacted by mental health conditions. She has focused her work on expanding evidence-based practices, improving early intervention and building a broader array of available services and supports that promote resiliency and recovery.



### Andrew Sperling

*Director of Federal Legislative Advocacy, NAMI*

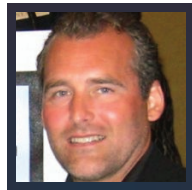
Andrew Sperling is the Director of Federal Legislative Advocacy for NAMI, the National Alliance on Mental Illness. He leads NAMI's legislative advocacy initiatives in Congress and before federal agencies. Mr. Sperling works on issues affecting the mental health community with a focus on improving the lives of people with severe mental illnesses. Since 1994, Mr. Sperling has also served as Co-Chair of the Consortium for Citizens with Disabilities (CCD) Housing Task Force.



### David Fleming

*President and CEO of Donate Life America*

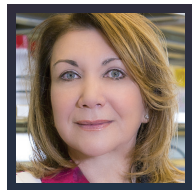
"My best business decision has been to make time to invest deeply in relationships with business partners and advisers. Over the years, it has been these relationships that have been at the core of many personal and organizational successes. When you wonder what you should invest in, invest in people." David serves as the president and CEO of Donate Life America, since 1998. He attended the College of William & Mary, B.B.A. in accounting, minor in religious studies, in 1990.



### Dr. Deborah Mash

*Professor of Neurology and Molecular and Cellular Pharmacology*

Dr. Deborah Mash is a neuroscientist, lecturer, and inventor that has dedicated more than 25 years of her research career to unlocking the secrets of the human brain. Nationally recognized as a leading researcher in neuroscience and brain disorders, she has played a pivotal role in more than 200 published studies investigating aging, neurodegenerative and neuropsychiatric diseases. Dr. Mash graduated cum Laude from Florida State University, receiving her PhD in pharmacology from the University of Miami. She completed a postdoctoral fellowship in neurology at Beth Israel Hospital, Harvard Medical School. Dr. Mash continues to support her community by educating the public about the next biological frontier- the human brain.



## SESSION SPEAKERS

### Betsey O'Brien

Betsey has been employed by NAMI South Carolina since November 2004. Betsey promotes NAMI programs and support groups to the affiliates in South Carolina.

### Michelle Ready

Michelle is active in many NAMI programs. In 2016 she received NAMI SC's Solid Gold Member of the year.

### Tom Mayne

Tom works for the South Carolina Vocational Rehabilitation Department as the Work Incentive Planning and Assistance (WIPA) program director.

### Christopher Haines

Christopher is the program Coordinator for School-Based Mental Health Services and Intensive Community-Based Services at Greenville Mental Health Center.

### Enid Carranza

Enid is a Board Member of the National Alliance on Mental Illness of the Lowcountry and a bilingual State Trainer for NAMI Basics. She is a cultural writer and the Development Officer for La Isla Magazine in the Lowcountry.

### Joy Jay

Joy is the Director of Mental Health America of South Carolina.

### Gwynne Goodlett

Gwynne has been a tireless advocate for children, youth and their families for nearly two decades at both the individual and systemic level.

### Ken Dority

Ken has served since 2013 as the Executive Director, National Alliance on Mental Illness, in Greenville, SC

### Lloyd Hale

Lloyd works for the South Carolina Department of Mental Health as a certified peer support specialist and client affairs coordinator.

### David DeStefano

David is the Chief Executive Officer/President at We Are Sharing Hope SC, in Charleston, SC

### Jeff Thomas

Prior to joining the field of donation and transplantation, Jeff began as a surgical first assistant for a large orthopedic surgical group in Jackson, MS. He now serves as Chief Clinical Officer at LifePoint in Charleston, SC.

We thank all of our speakers for their participation in the NAMI SC annual conference!

## CONFERENCE SPONSORS



We would like to encourage all of our conference participants to take the time to visit our exhibitors between 8:30 - 9:00am on Saturday, and between breakout sessions.



NAMI South Carolina  
PO BOX 1267  
Columbia, SC 29202

# 2017 NAMI SC

State Mental Health Conference

# ECLIPSED BY HOPE

**Fri. August 25 - Sat. August 26, 2017**

The Meridian Building &  
The Marriott in Columbia, SC

